

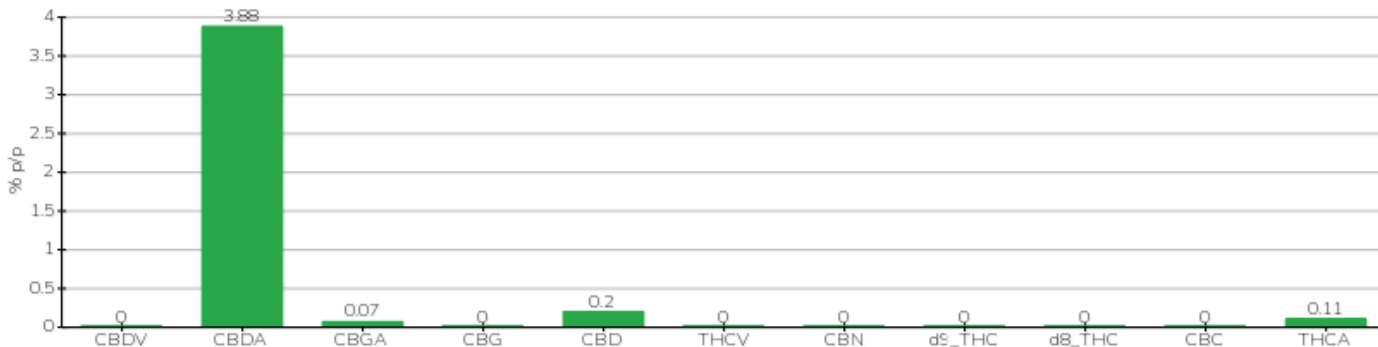
TECHNICAL REPORT

| | | | |
|-----------------------------------|--------------------------------------|---------------------------|--------------------|
| Committente | Green Valley società agricola a.r.l. | Etichetta | Premium Hemp |
| Data accettazione | 26/11/2021 | Tipologia campione | infiorescenza |
| Data analisi | 29/11/2021 | varietà | NA |
| Codice riferimento interno | GRV2611.A.1 | N. Cartellino | NA |
| Metodica analitica | HPLC - HS - Rev.2 | Campionamento | a cura del cliente |
| Lotto | GVFIN1T21EU | | |

Note

| Parametro | % p/p | Metodo |
|-------------------|--------------|------------------|
| CBDV | <0.01% | HPLC-UV |
| CBDA | 3.88% | HPLC-UV |
| CBGA | 0.07% | HPLC-UV |
| CBG | <0.01% | HPLC-UV |
| CBD | 0.20% | HPLC-UV |
| THCV | <0.01% | HPLC-UV |
| CBN | <0.01% | HPLC-UV |
| d9_THC | <0.01% | HPLC-UV |
| d8_THC | <0.01% | HPLC-UV |
| CBC | <0.01% | HPLC-UV |
| THCA | 0.11% | HPLC-UV |
| CBD TOTALE | 3.61% | CALCOLATO |
| CBG TOTALE | 0.06% | CALCOLATO |
| THC TOTALE | 0.10% | CALCOLATO |

CAMPIONE ANALIZZATO: NA(5.00gr)



Pineto 29/11/2021